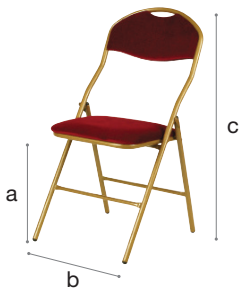


# Super De Luxe



Folding chair, fire-retardant

## Dimensions



- a 48 cm
- b 39 cm
- c 88 cm
- 5 kg
- 38 cm

## Frame

- ✓ Material steel; hammerscale or gold
- ✓ Dimensions tube diam. 22 x 1,25mm

## Seat/Back

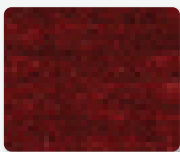
- ✓ Material Seat/Back Upholstered and fire-retardant
- ✓ Reinforced seat

## Features

- ✓ Reinforcement bar between front and back legs
- ✓ Legs are fitted with sustainable caps
- ✓ The back is fitted with a convenient hand hold for ease of handling
- ✓ The back is curved to provide comfort
- ✓ Fire-retardant seat

## Colours

Seat



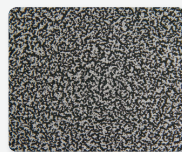
Versailles rouge

Seat



Versailles noir

Frame



Hammerscale

Frame



Gold

## Add ons

Trolley



- ✓ Material Steel
- ✓ Coating Hammerscale grey powdercoating
- ✓ Features Fitted with vulcanised wheels, diam10 cm  
2 braked swing-wheels + 2 fixed wheels  
3 functions: transportation, storage and protection  
Can hold 30 chairs  
Also available in knock-down version

*Connector*

