

Laze Table Ottoman

Polyethylene stackable lounge table/ottoman



Dimensions



- a 38,5 cm
- b 75 cm
- 8,1 kg

Frame

- ✓ Material Polyethylene (PE) - pinhole free
- ✓ Thickness 5 mm

Features

- ✓ Stackable: 10 pcs high
- ✓ In- & outdoor use
- ✓ UV- and water resistant
- ✓ Optional: Lumen LED Light
- ✓ Can be used as a side table, wine cooler, plant pot or parasol base
- ✓ Add the seating pas to se it as a pouf
- ✓ Connect the seating units to construct a lounge set



Frame Colours



White Black

Table top



White Black

Material : Laminated hardcore compact (HPL)

Dimensions : 28,5x28,5x1,2 cm

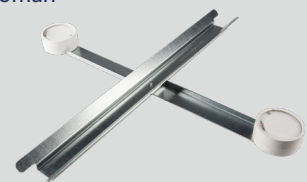
Add-ons

- Lumen LED light
- Splashproof IP65
- Remote control, magnet and plastic holder incl.
- Total LED power 10W
- Beam angle 120°
- Charging time 3 - 5h
- Battery run time 8 - 15h



*Assembly kit included

- Connector + Lumen LED holder
- Galvanised steel
- To connect Laze seating units and/or Laze Ottoman
- To install Lumen LED lights into Laze
- Dual function





Seats Laze Ottoman



Material

- ✓ Sunbrella
- ✓ Feature
- ✓ Dimensions
- ✓ Thickness

EZY DRY FOAM
Does not absorb water, for outdoor use
60x60cm
4 mm



Sunbrella solids & stripes fabrics



Arbor pebble
(APE)



Black
(BLA)



Ardoise
(ARD)



Lead chine
(LCH)



Navy blue
(NBL)



Polar blue
(PBL)

Silicone Plug



Material

- ✓ Colour white
- ✓ Fits in the hole in the bottom when used as an ice-bucket or plant pot. Remove plug to let out the water.



Product video

Add-ons

Trolley for Laze Chair/Ottoman



- ✓ Material
- ✓ Dimensions
- ✓ Coating
- ✓ Features

Steel
79x79x150 cm (LxWxH)
Hammerscale grey powdercoating
Stores 10 Chairs/Ottoman
Ideal for storage in smaller places
Fitted with vulcanised wheels, 125 mm dia
2 braked swing-wheels + 2 fixed wheels
3 functions: transportation - storage - protection