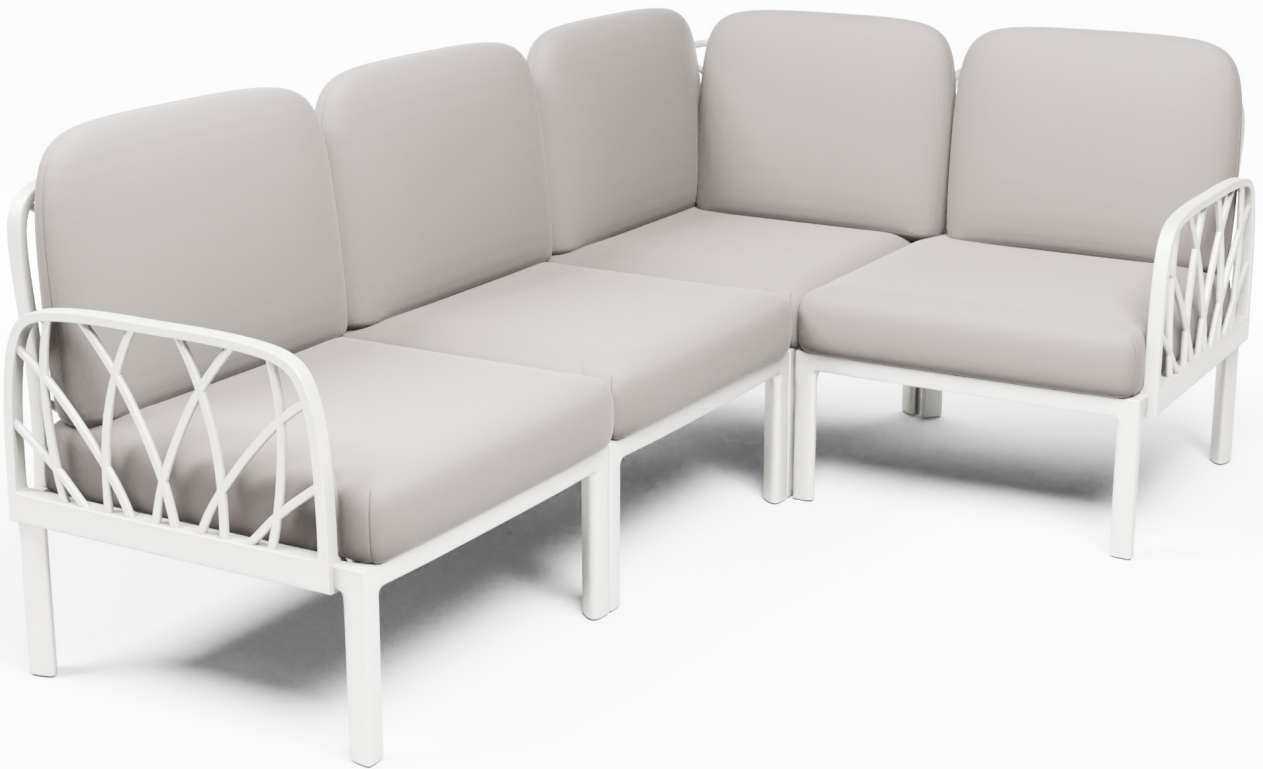


# RIMINI LOUNGE

## INSTALLATION GUIDE



# RIMINI LOUNGE COMPONENTS



BASE



BACKREST



ARMREST



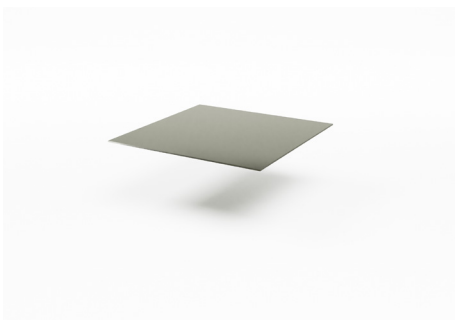
CUSHION BASE



CUSHION BACKREST



CUSHION CORNER



GLASS TABLE TOP

\*HPL Compact table top also possible



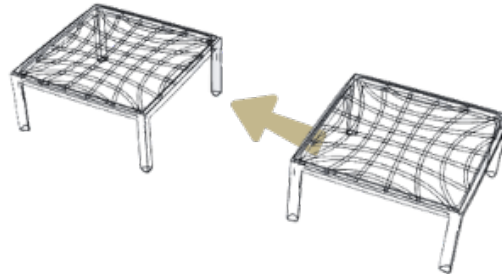
CONNECTOR

# 1.

Use the square base component to create your lounge design. The square profile of the base component allows you to create any setting you desire.



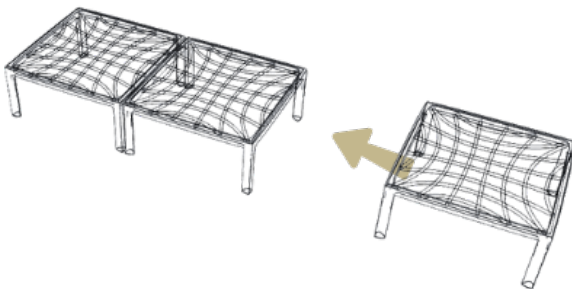
example.



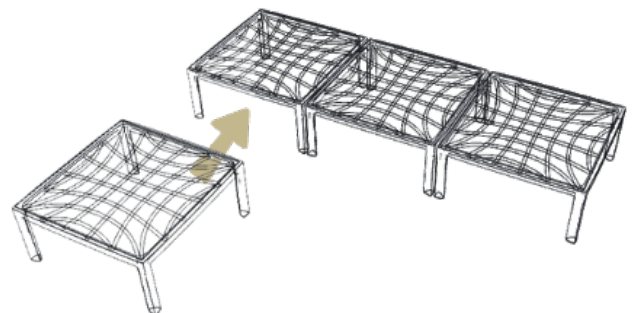
## HOW TO INSTALL

Place the base components next to each other until you achieve the desired setting.

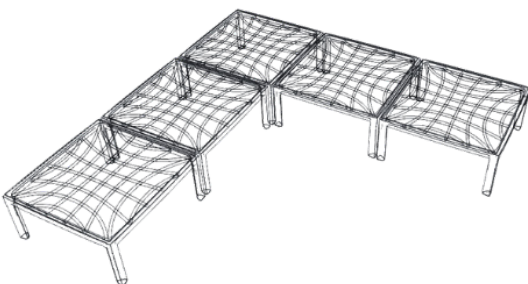
**a.**



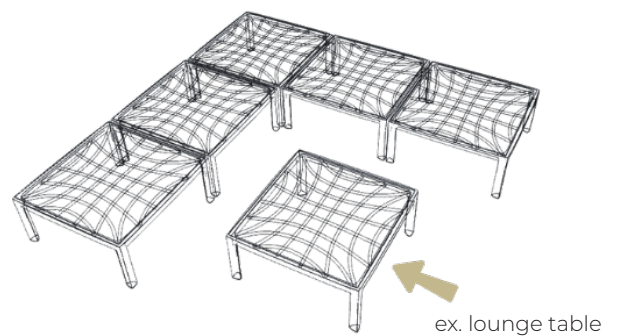
**b.**



**c.**

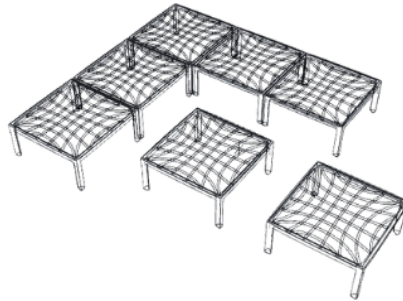


**d.**



# Ex.

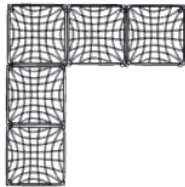
example



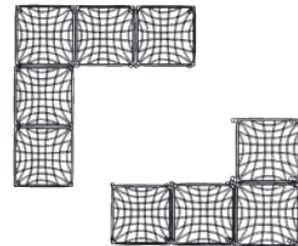
## EXAMPLES

Anything is possible: build, move, switch, adapt, ... until you have reached the desired setting at your location.

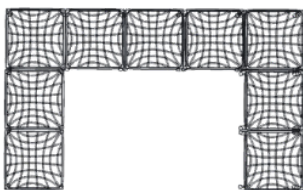
example 1



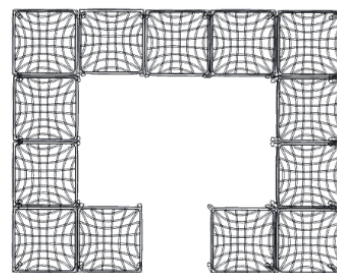
example 2



example 3



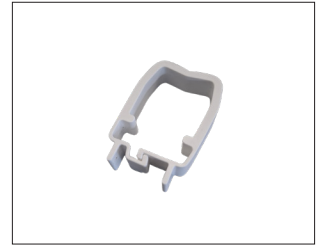
example 4



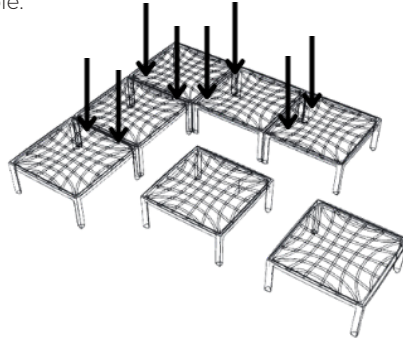
Endless other examples possible!

## 2.

Place the connectors in order to keep the base components together.

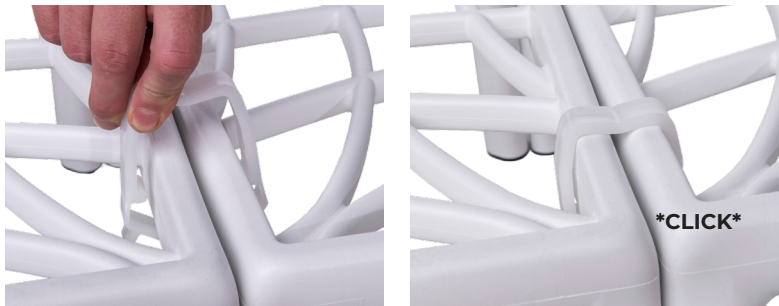


example.



### HOW TO INSTALL

Slide the connector over the edges of the adjacent base components and then press the connector in until you hear a click.



result

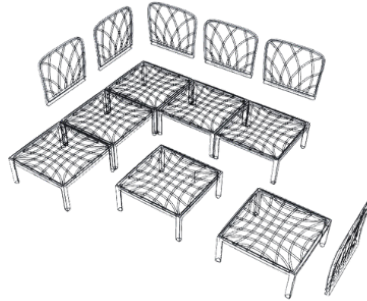


# 3.

Place the backrests onto the base components.



example



## HOW TO INSTALL

Place backrest under an angle of 45° onto the edge of the base component. Then tilt the backrest until it is in the upright position and locked onto the base.

**a.**



**b.**

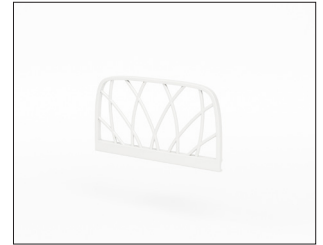


**c.**

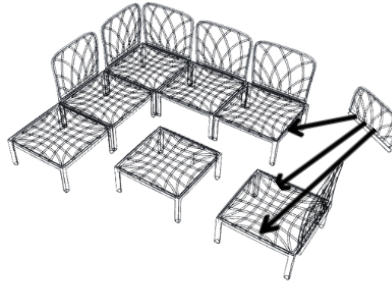


# 4.

Place armrests onto the base components  
(\*placing armrests is optional)

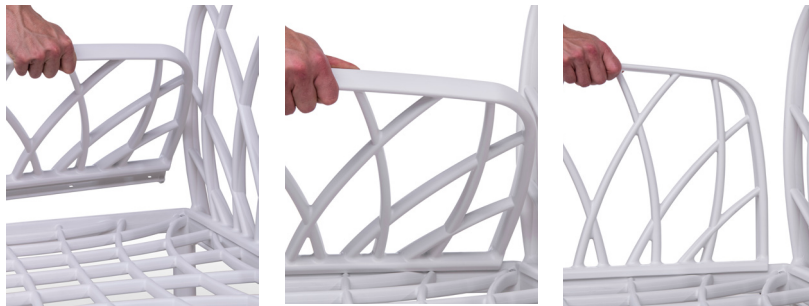


example



## HOW TO INSTALL

Place armrest under an angle of 45° onto the edge of the base. Then tilt the armrest until it is in the upright position and locked onto the base.



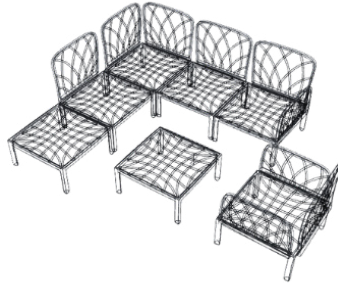
result



# 5.\*

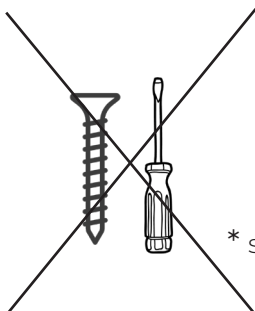
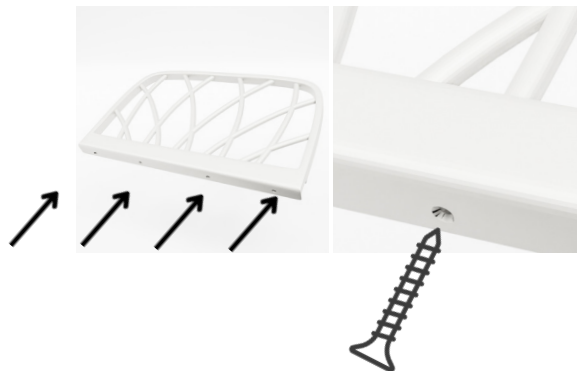
\*OPTIONAL: fix back- and armrests to the base parts with screws.

example



## EXTRA

Screw holes in back- and armrests are lined up with the screw holes in the base parts.

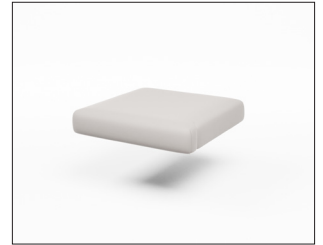


\* screws and screw driver not included

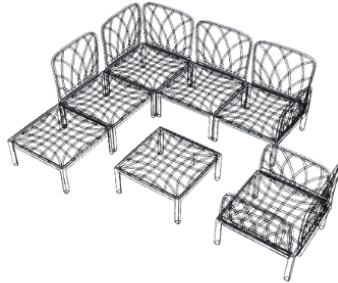


# 6.

Place the base, back- and corner cushions to complete your lounge setting.

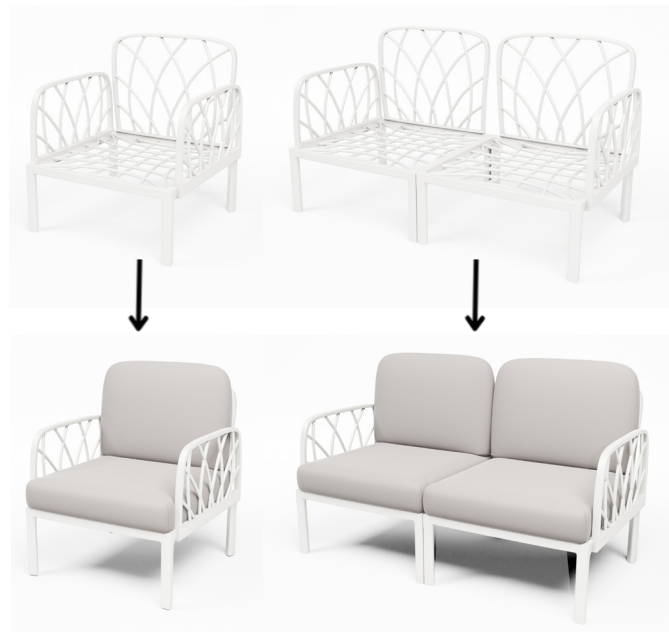


example



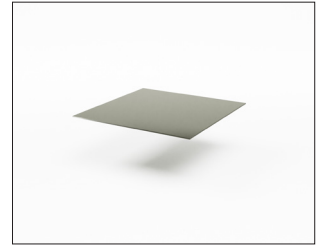
## EXTRA

All cushions are water- and dirt repellent.

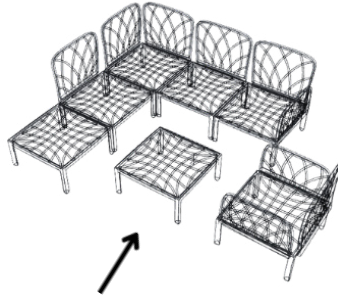


# 7.

Place glass table top on the last base to create a coffee table



example



## EXTRA

5mm tempered glass.



\*HPL Compact table top also possible

result

